

A National Survey of Community Forests on Public Land in Canada

Sara Teitelbaum

PhD Candidate

Faculty of Forestry and Environmental Management
University of New Brunswick

Introduction

- Growing literature on community forestry in Canada
- Literature enthusiastic about community forestry - agreement that more experiments in devolution is desirable
- However disconnect exists between ideas associated with community forestry and current state of practice - particularly in eastern Canada

Survey of community forests

Objective:

- to describe basic characteristics of community forests across Canada

Method:

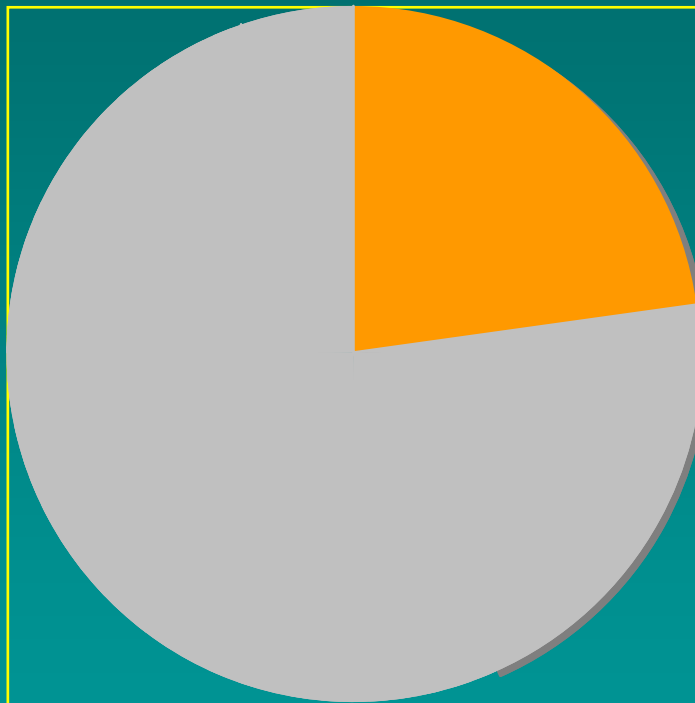
- telephone and email survey to each initiative
- Initiatives identified through literature, Internet, contact with relevant organizations

Survey information

Survey information:

Name	Type of tenure
Province	Organizational structure
Objectives	Decision-making structure
Year Started	First Nation participation
Type of landbase	Financial self-sufficiency
Size of landbase	

The umbrella of community forestry



■ **Community Forests**

■ **Co-management**

■ **Joint Ventures**

■ **First Nations
Forests**

■ **CF with Volume
Tenures**

Definition of community forestry

- My definition based on a) features commonly described in the literature, and b) workability

“a public forest area, managed by the community as a working forest for the benefit of the community”

Definition of community forestry

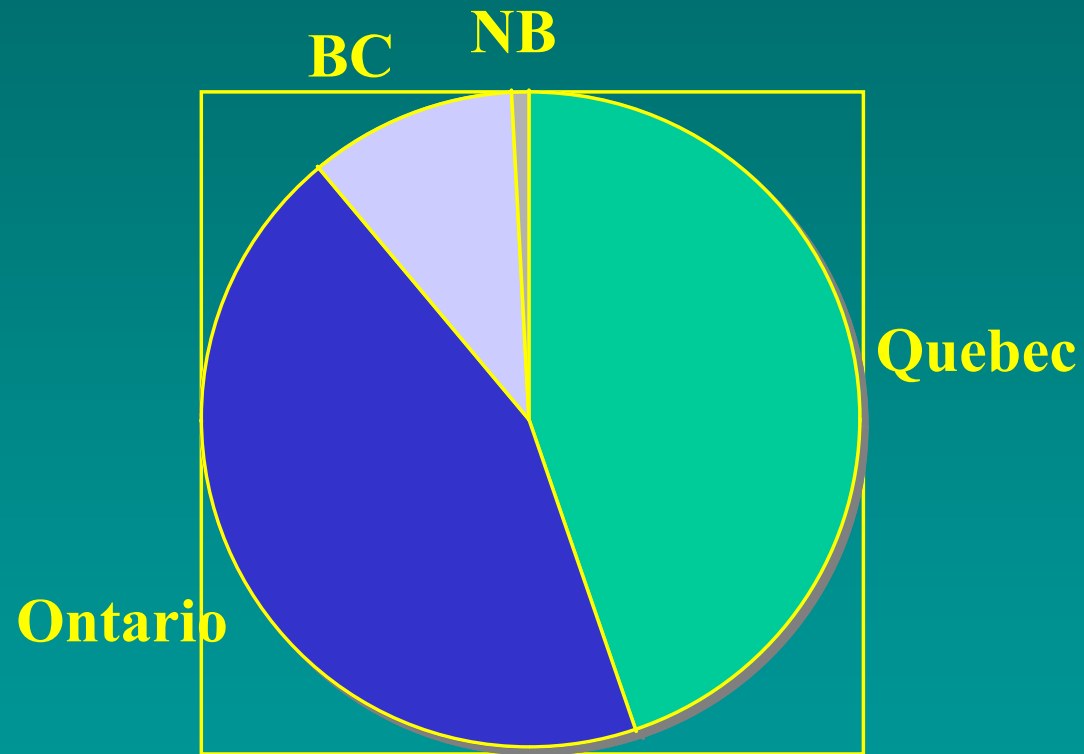
“a public forest area, managed by the community as a working forest for the benefit of the community”

- Public = Crown land and local government land
- Community management = more than 50% community representation in decision-making
- Working forest = some forest harvesting for revenue-generation
- Community benefit = explicit mandate to benefit the community
- First Nations initiatives not included in this survey - see NAFA 2003, “Aboriginal held forest tenures in Canada”

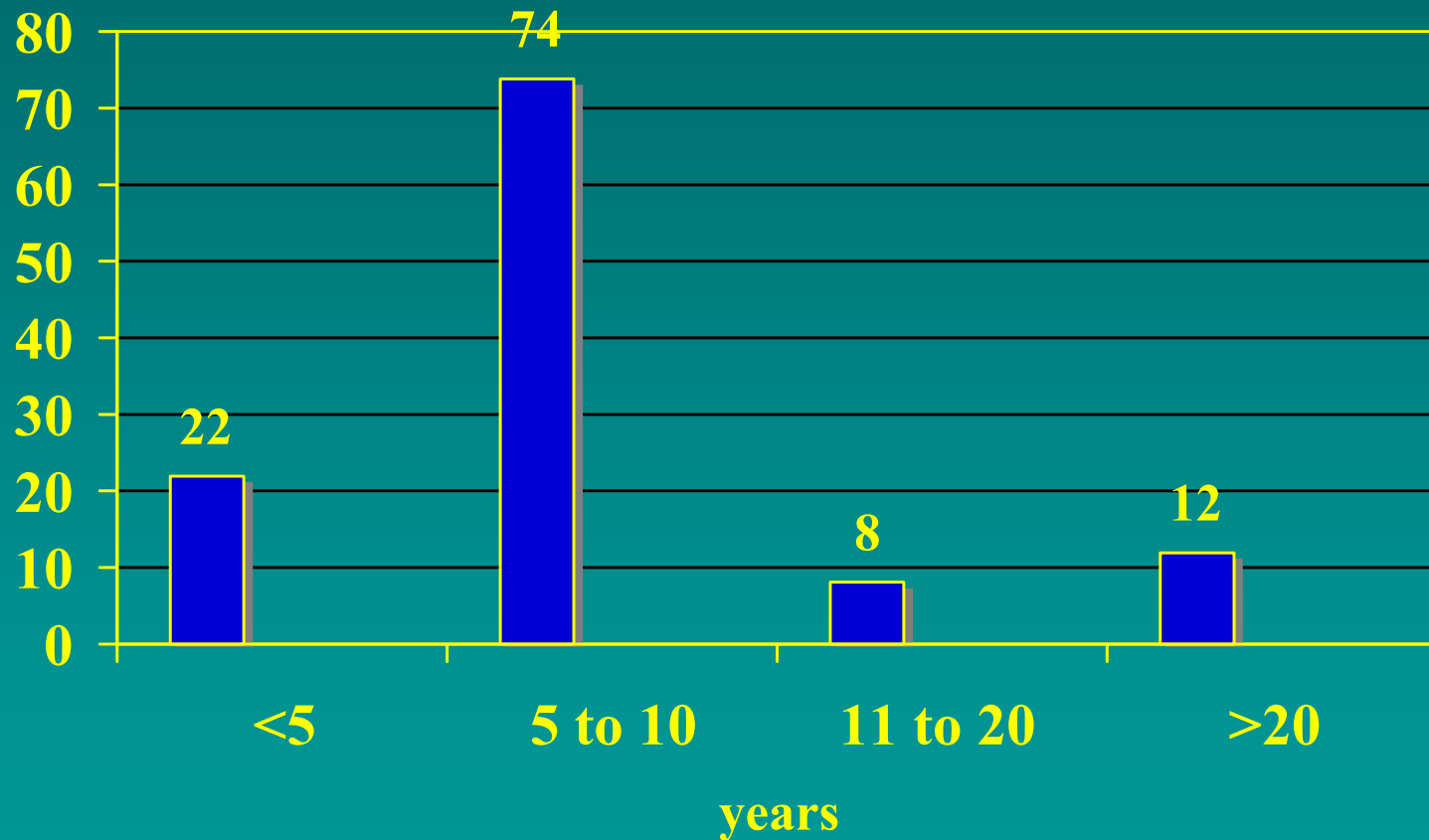
Results

- 116 community forests
- 52 in Quebec - a) intramunicipal lands managed by regional governments and b) forest management contracts managed by local organizations
- 51 in Ontario - mainly county and conservation authority forests
- 12 in BC - a mix! 1 in NB - a municipal forest
- 4 models identified: local government on Crown land, local government on fee simple land, conservation authority, forest organization

Location of Community Forests

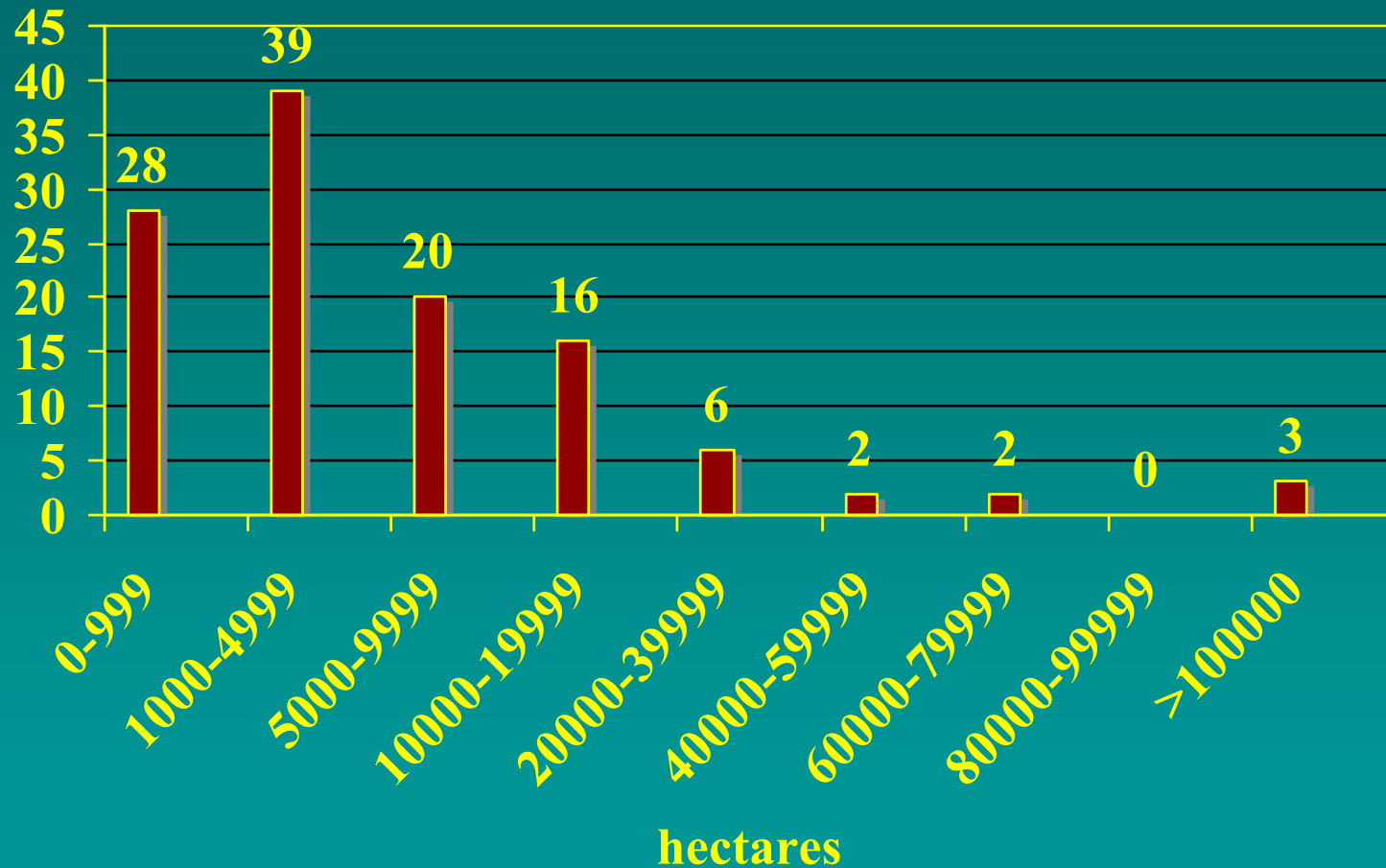


Age of Community Forests



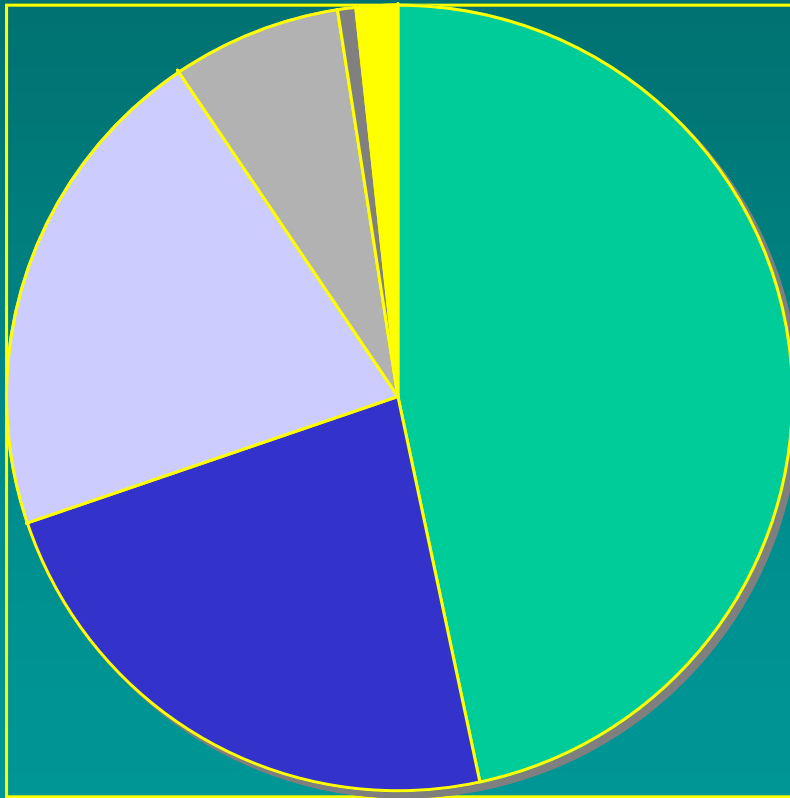
Teitelbaum, S. Beckley, T., Nadeau, S. 2006. A National Portrait of Community Forestry on Public Land in Canada. *The Forestry Chronicle*, 82(3): 416-428.

Size of landbase managed by community forests



Teitelbaum, S. Beckley, T., Nadeau, S. 2006. A National Portrait of Community Forestry on Public Land in Canada. *The Forestry Chronicle*, 82(3): 416-428.

Tenures



■ Fee simple ownership
(NB, QC, ON, BC)

■ Territorial
Management
Agreement (QC)

■ Forest Management
Contract (QC)

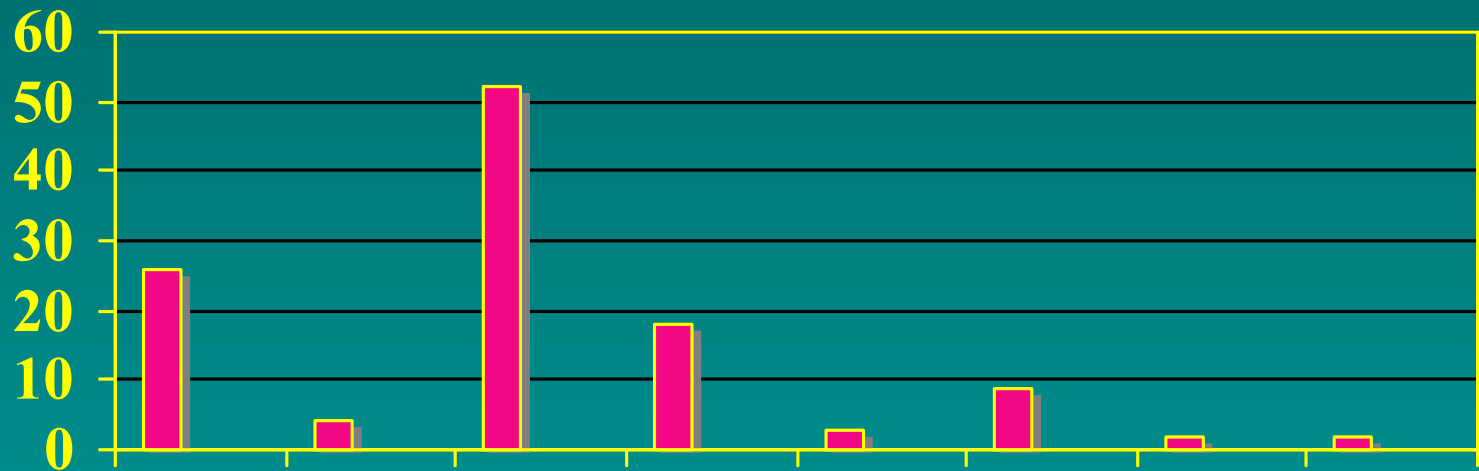
■ Community Forest
Agreement License
(BC)

■ Sustainable Forest
License (ON)

■ Tree Farm License
(BC)

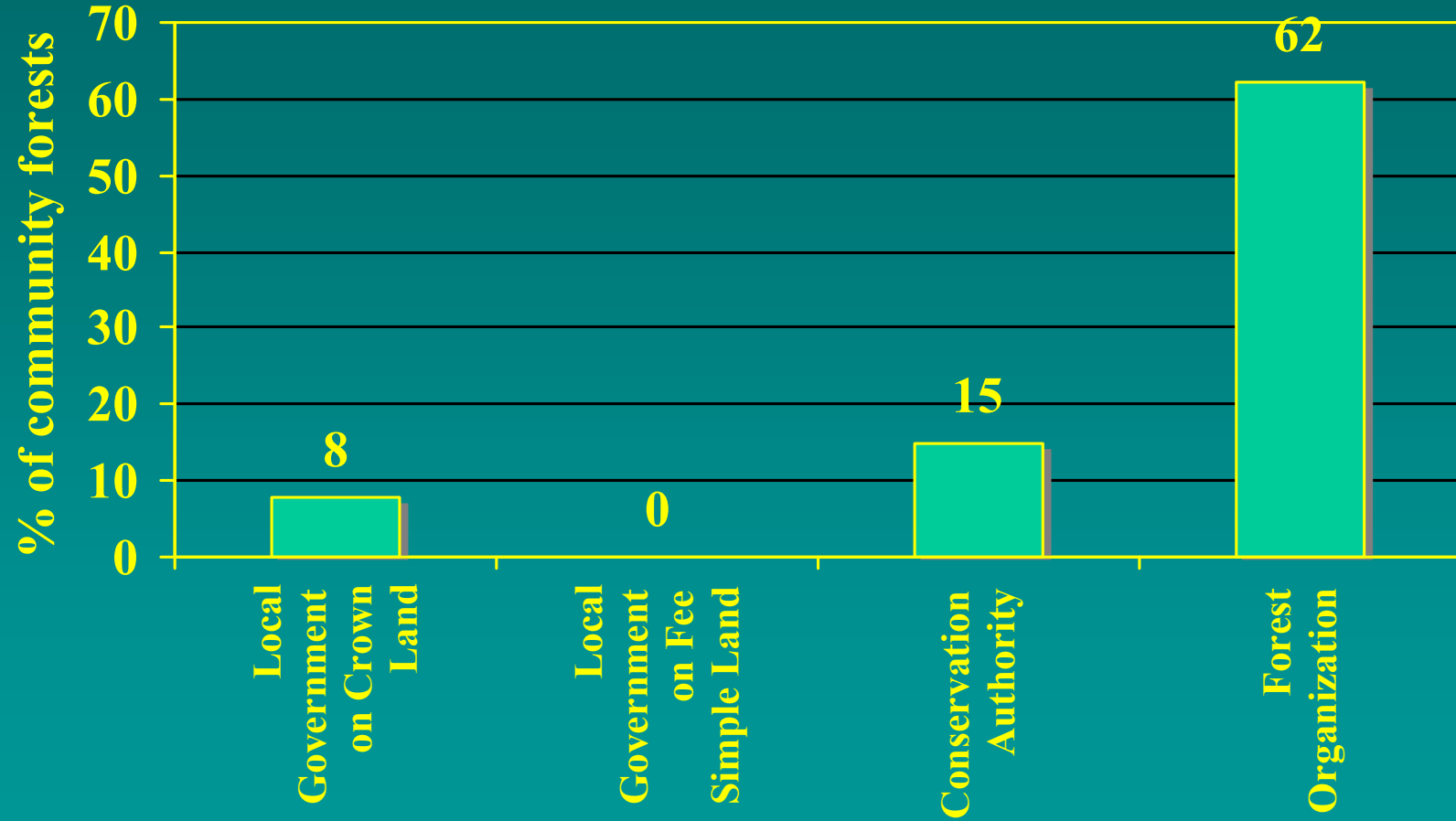
Organizational types

number of community forests



Conservation Authority
Municipality
Regional Municipality
County
Village/City
Non-profit
For-profit Corp
Joint Mgmt Org

Participation of First Nations



Conclusions

- Greater diversity of initiatives than was apparent from the literature - geographically limited
- Can be categorized within 4 types:
 - Local government on Crown land
 - Local government on fee simple land
 - Conservation Authority
 - Forest Organization

Conclusion

- Most community forests are small compared with corporate tenures
- Few tenures specifically designed for community forestry
- The local government model is dominant
- Innovation transcends the different provincial approaches